

User's Manual

EIZO ScreenSlicer™

Screen Divider Software

Important

Please read this User's Manual carefully to familiarize yourself with safe and effective usage.

1. Introduction	3
1 - 1. Features	3
2. Setting Up	4
2 - 1. System Requirement	4
2 - 2. Installing EIZO ScreenSlicer	5
2 - 3. Uninstalling EIZO ScreenSlicer	7
3. Starting and Exiting	8
3 - 1. Starting EIZO ScreenSlicer	8
3 - 2. Displaying the Software Version	8
3 - 3. Exiting EIZO ScreenSlicer	8
4. Division Pattern Settings	9
4 - 1. Applying Division Patterns	10
4 - 2. Window Layout	11
4 - 3. Creating Division Patterns	12
4 - 4. Editing Division Patterns	12
4 - 5. Deleting Division Patterns	15
5. Software Registration	16



No part of this manual may be reproduced, stored in a retrieval system, or transmitted, in any form or by any means, electronic, mechanical, or otherwise, without the prior written permission of EIZO NANA O CORPORATION.

EIZO NANA O CORPORATION is under no obligation to hold any submitted material or information confidential unless prior arrangements are made pursuant to EIZO NANA O CORPORATION's receipt of said information. Although every effort has been made to ensure that this manual provides up-to-date information, please note that EIZO monitor specifications are subject to change without notice.

Internet Explorer, Windows and Windows Vista are registered trademarks of Microsoft Corporation in the United States and other countries.

EIZO ScreenSlicer is a trademark of EIZO NANA O CORPORATION.

EIZO, the EIZO Logo, ColorEdge, FlexScan, RadiForce, RadiCS, and ScreenManager are registered trademarks of EIZO NANA O CORPORATION in Japan and other countries.

All other company and product names are trademarks or registered trademarks of their respective owners.

1. Introduction

EIZO ScreenSlicer is the software that divides a screen and lays out multiple windows efficiently.

1 - 1. Features

- **Screen Dividing Function**

It is possible to set division patterns and lay out windows easily.

- **Multi-monitor Setting Support**

Using the monitor with multi-monitor setting, each monitor can be setup individually.

- **Software Registration Function**

Once the software is registered, it is possible to lay out windows on the registered frame when the software is started next time.

If the URL is registered with the Internet Explorer, windows will be laid out on the registered frame when a specific URL is opened using the Internet Explorer.*

* For Internet Explorer only

2. Setting Up

2 - 1. System Requirement

EIZO ScreenSlicer operates under the system shown below.

OS	Microsoft Windows 8 (32 bit and 64 bit) Microsoft Windows 7 Service Pack 1 (32 bit and 64 bit) Microsoft Windows Vista Service Pack 2 (32 bit and 64 bit) Microsoft Windows XP Service Pack 3 (32 bit) Microsoft Windows XP Service Pack 2 (64 bit)
Monitor	FlexScan series monitors ColorEdge series monitors RadiForce series monitors FORIS series monitors (Except for SC**XA1 / SC**XD1 / SC**XD2, VT**XD1, and DT**ZD1)

Note

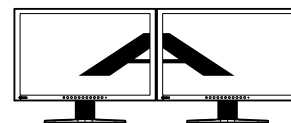
- If your OS is Windows 8 or Windows 7, some functions of the ScreenSlicer may not be available by conflict with the Snap function. To disable the Snap function, follow the procedure below.
 1. Select "Control Panel" - "Ease of Access" - "Ease of Access Center" - "Make the mouse easier to use". "Make the mouse easier to use" dialog appears.
 2. Check the "Prevent windows from being automatically arranged when moved to the edge of the screen" check box.
- When multiple monitors are connected, each monitor should display an independent screen. Displaying the same screen on each monitor or across multiple monitors prevents adjustment using the EIZO ScreenSlicer software (except "Mouse pointer movement" and "Backlight Saver"). For details of how to change the settings, see the User's Manual of the graphics board.



Independent screen on each monitor (OK)



Same screen on each monitor (NG)



A screen over the multiple monitors (NG)

2 - 2. Installing EIZO ScreenSlicer

Note

- The user account to be used for installing EIZO ScreenSlicer must have the “Administrators” privilege.
 - For user account privilege settings, contact your system administrator.
-

Procedure

● **To install the software from the EIZO LCD Utility Disk (CD-ROM)**

1. Insert the “EIZO LCD Utility Disk” CD-ROM to the CD-ROM drive

The startup menu opens. Click on the “Software” tab.

Click “EIZO ScreenSlicer” on the menu.

Tips

- When the startup menu does not appear automatically, double click “Launcher.exe”.
-

2. Install the software

Click “Install” on the menu, then the EIZO ScreenSlicer installer starts up.

Follow the instruction of the menu to install the software.

● **To download and install the software from our web site**

1. After unzip the downloaded file, click “setup.exe”

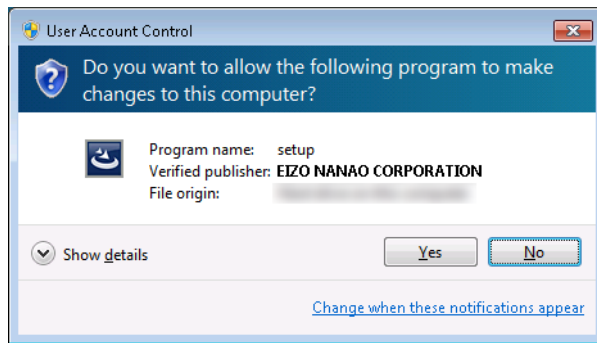
The EIZO ScreenSlicer installer starts up.

2. Install the software

Follow the instruction of the menu to install the software.

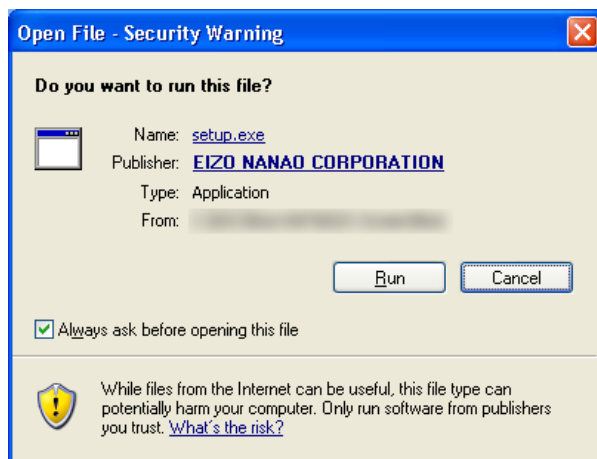
Tips

- If your OS is Windows 8, Windows 7, or Windows Vista, the “User Account Control” dialog may appear. *1
Click “Yes” (Windows 8, Windows 7) / “Continue” (Windows Vista) to open the menu.



*1: The “User Account Control” dialog does not appear depending on the setting.

- If your OS is Windows XP, the “Security Warning” dialog may appear. *2
Click “Run” to open the menu.



*2: The “Security Warning” dialog does not appear depending on the setting.

Note

- If your OS does not meet the system requirements, the error message will appear and the installation will not be executed.

Follow the instruction of the menu to install the software.



2 - 3. Uninstalling EIZO ScreenSlicer

Procedure

- Windows 8 / Windows 7 / Windows Vista

- 1.** Select “Control Panel” - “Programs” and click “Uninstall a Program”
- 2.** Select “EIZO ScreenSlicer” from the list and click “Uninstall”

- Windows XP

- 1.** Select “Control Panel” - “Add or Remove Programs”
- 2.** Select “EIZO ScreenSlicer” from the list and click “Remove” to remove the software

3. Starting and Exiting

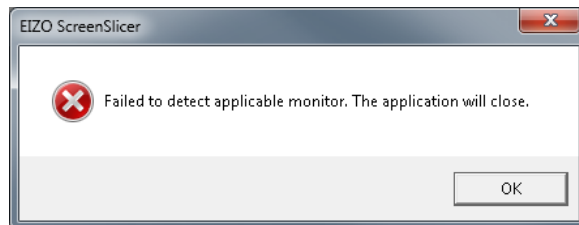
3 - 1. Starting EIZO ScreenSlicer

EIZO ScreenSlicer starts automatically when you log on the PC. When it has started up, the EIZO ScreenSlicer icon is displayed on the notification area to indicate that the program is resident.



Tips

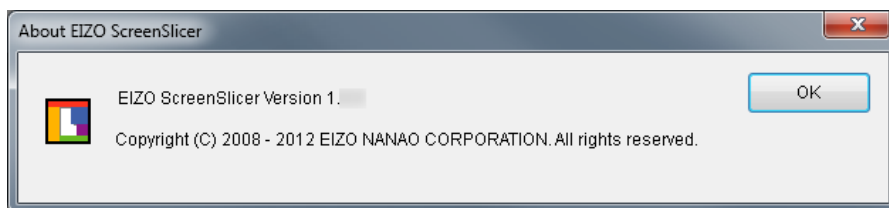
- Once EIZO ScreenSlicer has been exited, restart as follows.
 - If your OS is Windows 7, Windows Vista, or Windows XP, click “Start” – “All Programs” – “EIZO” – “EIZO ScreenSlicer”.
 - If your OS is Windows 8, Click the tile displayed as “EIZO ScreenSlicer” in the Start Screen.
- If any of the following messages appear at startup, check if the system requirements described in “[2 - 1. System Requirement](#)” (page 4) are met.



3 - 2. Displaying the Software Version

Procedure

1. Right-click the EIZO ScreenSlicer icon on the notification area to open the menu
2. Click “About...”



3 - 3. Exiting EIZO ScreenSlicer

Procedure

1. Right-click the EIZO ScreenSlicer icon on the notification area to open the menu
2. Click “Exit”

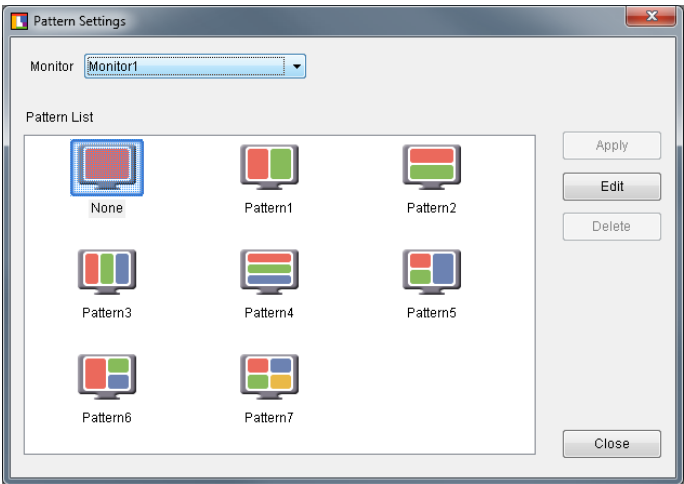
4. Division Pattern Settings

EIZO ScreenSlicer defines the size and position of each window with the Pattern Settings.
Eight patterns have already been preset, and another five patterns can be added.

Procedure

- 1. Right-click the EIZO ScreenSlicer icon on the notification area to open the menu**
- 2. Click “Pattern Settings”**

The dialog to set the division pattern appears.



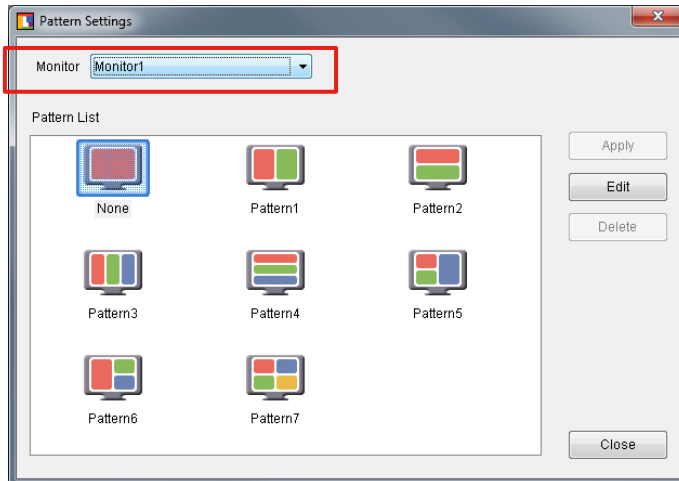
Monitor	Select the monitor to set the division pattern.
Pattern List	Display the division pattern list.
Apply	Apply the selected division pattern.
Edit	Edit the division pattern.
Delete	Delete the added patterns. * Preset patterns cannot be deleted.
Close	Close the dialog.

4 - 1. Applying Division Patterns

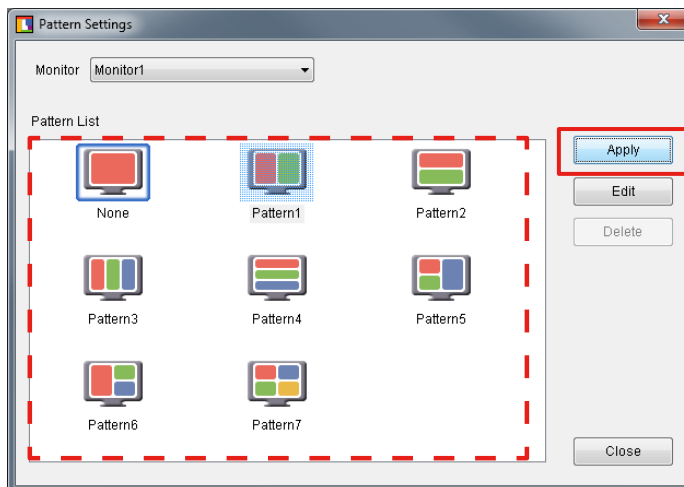
Specify the pattern setting to define the size and position of each window.

Procedure

1. From “Monitor” pull-down menu select the monitor to set the division pattern when using the monitor with multi-monitor setting



2. Select the division pattern from the Pattern List and click “Apply”



Tips

- When selecting the division pattern that is already applied, “Apply” is not available.

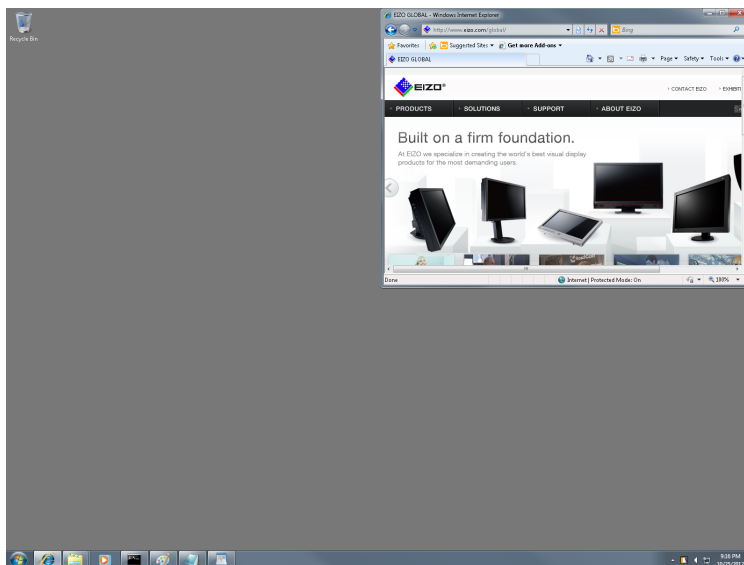
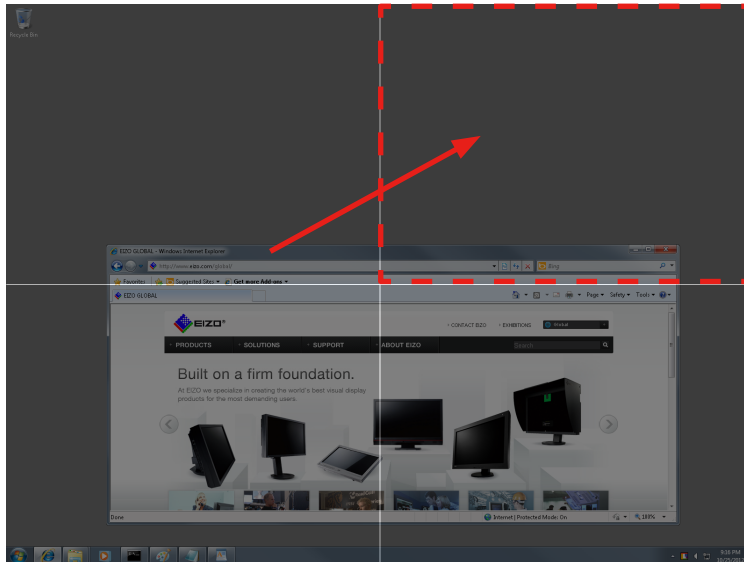
4 - 2. Window Layout

Lay out the window in the frame.

By holding down “Shift” key and dragging the title bar of the window, the screen switches to the window layout screen.

Move the window until the cursor is positioned in the layout frame.

The window size automatically changes according to the frame.



Tips

- The maximized window cannot be laid out. Reduce the display size of the window.
- Windows that have fixed sizes such as dialogs cannot be laid out.
- When the reducible or enlargeable range of the window size is limited, the window size does not change according to the frame.
- Windows that have no title bar cannot be laid out.
- When using the monitor with multi-monitor setting, the screen of the monitor in which the cursor is positioned switches to the window layout screen.

4 - 3. Creating Division Patterns

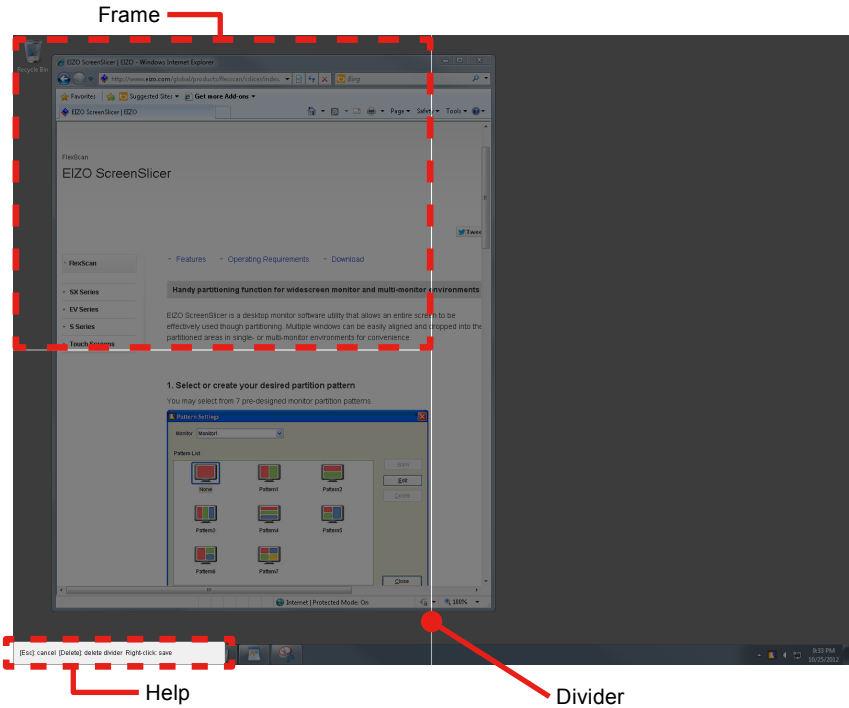
Up to five division patterns can be added.
Click “Edit” to open the edit window.
Regarding editing division patterns, refer to the “[Configuration of Division Patterns](#)” (page 12) of “4-4. Editing Division Patterns” section and onwards.

- Tips
- By clicking “Edit” with the division pattern selected, you can edit the pattern based on the selected pattern.
 - The icon of the added pattern is displayed as “User”.

4 - 4. Editing Division Patterns

Edit the added patterns.
Click “Edit” to open the edit window.

● Configuration of Division Patterns



Divider	A line that divides the layout area of windows.
Frame	An area surrounded with dividers. This defines the window size.
Help	This shows how to delete dividers, cancel or save settings.

● Adding dividers

Specify the starting point and ending point of the divider by dragging them with the pen cursor.

When you specify the approximate position of the divider, the angle is automatically corrected horizontally or vertically, and then the divider is extended to the crossed divider or the end of the screen.

Tips

- The screen can be divided into up to 16 parts by adding up to 6 dividers.
-

● Deleting dividers

By clicking the divider with the double-headed arrow cursor, the selected divider turns green.

Click “Delete” key.

● Changing divider’s position

By pointing the cursor to the divider, the cursor changes to a double-headed arrow. Then drag the divider to any position.

● Canceling divider’s editing

Press “Esc” key or right-click to open the menu, and then click “Cancel”.

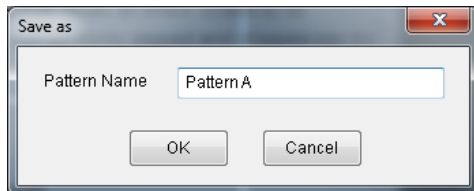
● Saving as a new file

After edit the divider, save the setting.

Procedure

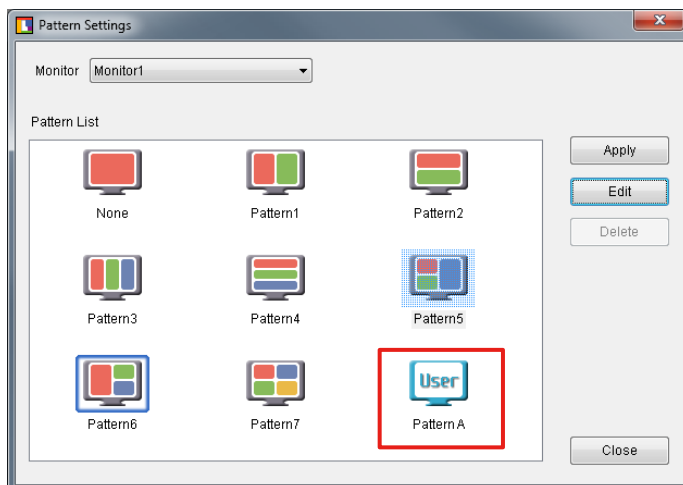
1. Right-click to open the menu, and click “Save as”

The dialog to specify the pattern name appears.



2. Enter a name and click “OK”

The created division pattern is added.



Tips

- Enter the pattern name no more than 10 characters.
-

When applying the saved division pattern, refer to [“4 - 1. Applying Division Patterns”](#) (page 10).

● Overwrite saving

After edit the divider, save the setting.

Right-click to open the menu, and click “Save”.

Tips

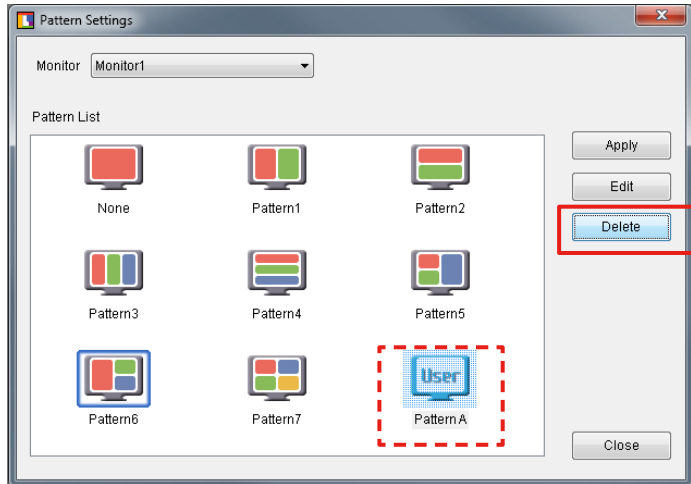
- Preset patterns cannot be overwritten.
-

When applying the saved division pattern, refer to [“4 - 1. Applying Division Patterns”](#) (page 10).

4 - 5. Deleting Division Patterns

Delete the added patterns.

Select the division pattern to be deleted, and then click “Delete”.

**Note**

- All the screens with this pattern applied will be undivided.

Tips

- Preset patterns cannot be deleted.

5. Software Registration

Register the software to the split frame. Once the software is registered, the window will be positioned on the same frame when the software is initially started after system startup.

Note

- The registered software is positioned on the frame only during initial startup of the software after the system is started.
- Up to five pieces of software can be registered on a single frame.
- Software that have specific size, such as a calculator, can not be positioned.
- When the division pattern is altered, the registrations of all software for the altered monitor are deleted.

Tips

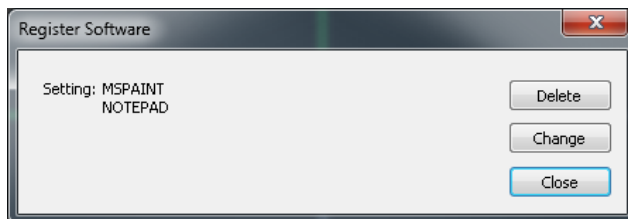
- When moving the frame position after startup, refer to “4 - 2. Window Layout” (page 11).

Procedure

1. Right-click the EIZO ScreenSlicer icon on the notification area to open the menu

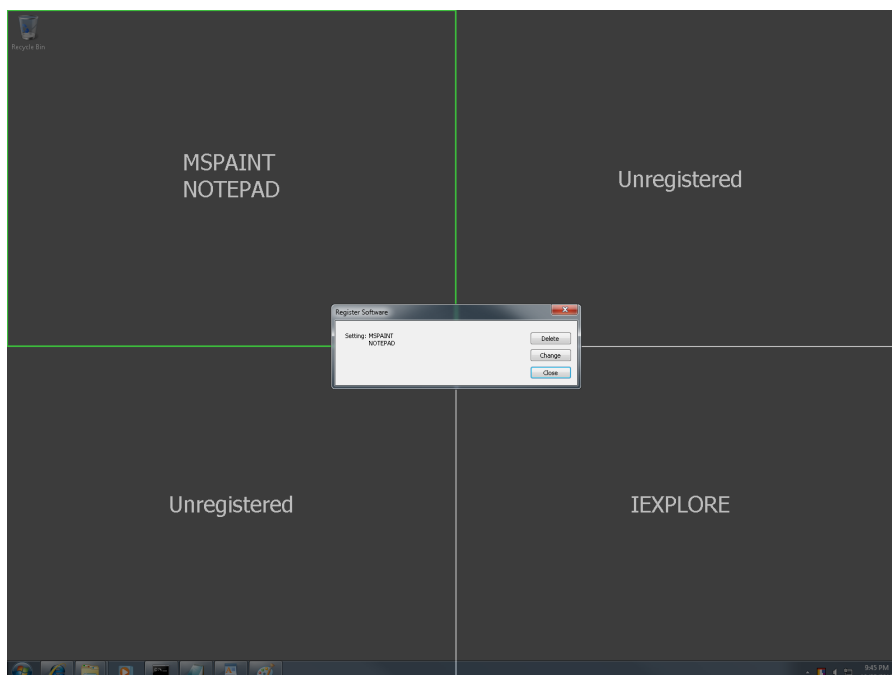
2. Click “Software Registration”

The “Software Registration” screen appears.



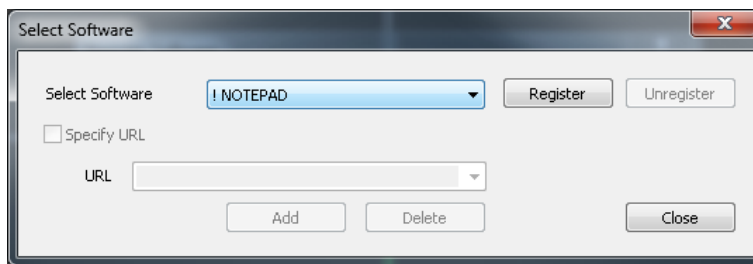
3. Click to select the frame for registering software

The outline of the selected frame is displayed in green. When using the monitor with multi-monitor setting, move the cursor of the mouse to select the monitor.



4. Click “Change”

The “Select Software” screen appears, and the software to be registered can be selected.



If the software does not appear in the list box, it will appear in the list box by starting the software.

The software already registered to another frame are marked with an exclamation point (“!”).

The software already registered to the selected frame are marked with an asterisk (“*”).



Tips

- Internet Explorer (IEXPLORE) is not marked with an exclamation point (“!”) even when it is already registered to another frame.

5. Click “Close” on the select menu of the software

This completes the software registration process.

6. Click “Close” in the software registration screen

The “Software Registration” screen is closed.

● URL Registration (for Internet Explorer only)

When registering the Internet Explorer, URL can also be registered as well. After starting up the Internet Explorer, display the registered URL or use the internet shortcut to display the registered URL. Then the window moves to the registered frame (only during the initial display after system startup)

Procedure

- 1. Select “IEXPLORE” on the “Select Software” screen, then click “Register”**
- 2. Check “Specify URL” checkbox**
- 3. Enter URL**
- 4. Click “Add”**

Note

- URL can only be registered when using the Internet Explorer.
- Two Internet Explorers, one with the URL and the other without the URL, can not be registered on the same frame.

Tips

- When registering a specific URL, use of the internet shortcut to start the Internet Explorer is recommended.
 - Internet Explorer with up to ten URL can be registered on the same frame.
 - The URL-specified window (including all URL registered) will move to the registered frame that best matches the URL registered (URL is matched starting from the beginning of the address to the end).
-



EIZO NANAO CORPORATION

<http://www.eizo.com>

Copyright © 2008-2012 EIZO NANAO CORPORATION All rights reserved.

11th Edition-November, 2012

03V22373L1
(U.M-SCREENLICER)